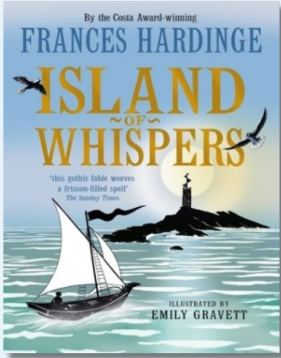


Island of Whispers

Frances Hardinge

Illustrated by Emily Gravett

BOOK TALK CARDS



ABOUT THE BOOK

On his first perilous journey, his ghostly passengers include his own father and the teenage daughter of the Lord of Merlank, who is unprepared to give her up and follows in pursuit in a bigger boat, filled with armed men and two dark magicians at his command. Milo must face untold traps, dangers and fears as he carries his ghostly passengers across secret seas...



OUR THOUGHTS

"A beautiful pic bk novella full of rich, descriptive language and a dreamy sense of place that is haunting in all respects. Gravett's striking illustrations are a perfect match for a remarkable tale of death & courage."

KS3

THEMES:

- Fantasy
- Death
- Grief
- Courage
- Responsibility

TIME TO TALK

- 1 How do the colours and the way the illustrator has represented the images contribute to the storytelling?
- 2 Describe the Island of Merlank, what makes it so dangerous and unique?
- 3 What do you think the role of the Ferryman is? How does the presence of ghosts impact the lives of the inhabitants of Merlank?
- 4 Why do you think the ghost sets fire to the sails of The Evening Mare? What message do you think she is trying to tell Milo?
- 5 Later, the ghost writes letters on the deck, why does she do this? What is she pleading for?
- 6 As Milo navigates the challenges and dangers of being a Ferryman, he begins to understand the burdens his father carried, his father often told him he wasn't cut out for the job - why do you think he did this? How does this change as the story goes on?
- 7 What are the key differences between Milo's approach to being a Ferryman and his father's approach? What qualities does Milo's character possess?
- 8 Why do you think the people on the Fortune rebel against the actions of Indigo and White?
- 9 How do you think the themes of loss and grief are resolved by the end of the book? How does Milo help the dead find peace?

TAKE THE TEXT FURTHER WITH OUR TOP 5 TITLES TO CONTINUE THE THEME:

